

- **DC 80 kW fast charger**
- **7" HD high-contrast**
- **LAN, 4G, RFID**
- **2 CCS2 connectors**
- **Type 2 connector**

Product ID	MEV80DRENGxCCST2
Charging mode	Level 2 & 3 / MODE 3 & 4
Connector type	CCS2 & Type 2 connectors
Number of connectors	2 (CCS2 + CCS2) + 1 Type 2
Charging control	APP, QR Code (optional), RFID
Internet connection	Ethernet / 4G
IP protection	IP55
Impact strength	IK10
Display	7-inch touch HD high-contrast
Display height mm	1225
Communication protocol	OCPP1.6J
Power Distribution	Yes
Reports	Full OCPP support
Certificate	CE, TUV, TR25, UKCA, RCM
Standard	IEC 61851, IEC 62196, DIN 70121, ISO 15118
Casing material	Galvanized steel
Cooling method	Forced Air Cooling
Power network configuration	TN-S, TN-CS
Peak efficiency	96%
Power meters	Yes
AC power Input rating	AC 400 V +/- 10%
Noise	≤60dB
Standby Power	≤99W
Input current	150 A
Output power	DC: 80kW / AC: 22kW
DC output voltage range	CCS2: 200-1000 V / Type 2: AC 400 V +/- 10%
DC output current	CCS2: 200A / Type 2: 32A
Power Limiting	Available
Storage temperature	-30 to 70°C ambient
Operating temperature	-25 to 65°C ambient
Operating humidity	5%~95% (no condensation)
Altitude	≤2000m
Electrical protection	Under- and Overvoltage protection, DC Overcurrent protection, Over-temperature protection, Surge protection
Dimensions mm	1700 (h) x850 (w) x450 (d)
Weight kg	310
Warranty	30 months



Morek EV 80 kW fast charger

Safe, reliable and efficient charging service while monitoring real-time charging status and progress.

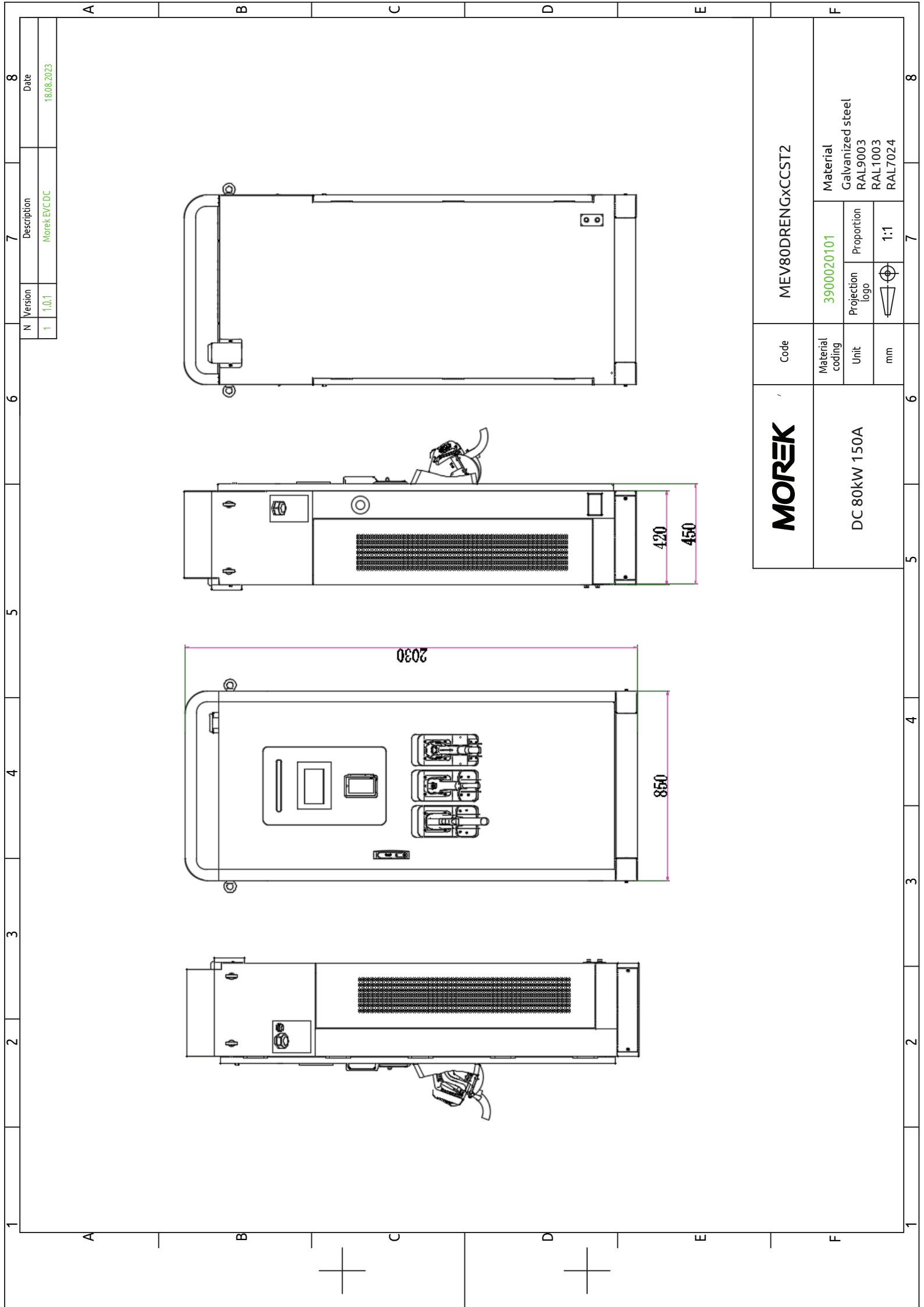
Scan for more

More information about Morek EV chargers and discussions about EV user cases can be found from



ev.morek.eu

Creating a better future for You



N	Version	Description	7	8
1	1.0.1	Morek EV/CDC		
			Date	18.08.2023

MOREK

Code MEV80DRENGxCCST2

Material coding	3900020101		Material Galvanized steel RAL9003 RAL1003 RAL7024
	Unit	Proportion	
mm	1:1		

DC 80kW 150A