

- **DC 60 kW fast charger**
- **7" LCD display**
- **LAN, 4G, RFID**
- **2 CCS2 connectors**

| | |
|-----------------------------|---|
| Product ID | MEV60DRENGxCCS |
| Charging mode | Level 3, MODE 4 ; CASE C |
| Connector type | CCS2 connectors |
| Number of connectors | 2 (CCS2 + CCS2) |
| Charging control | APP, QR Code (optional), RFID |
| Internet connection | Ethernet / 4G |
| IP protection | IP54 |
| Impact strength | IK10 |
| Display | 7-inch touch LCD |
| Display height mm | 1140 |
| Communication protocol | OCPP1.6J (OCPP2.0 ready) |
| Power Distribution | Yes |
| Reports | Full OCPP support |
| Certificate | CE certified |
| Standard | IEC61851-1 / IEC62196-3 |
| Casing material | Galvanized steel |
| Cooling method | Forced Air Cooling |
| Power network configuration | TN-S/TN-C-S/TT |
| Peak efficiency | >95% |
| Power meters | Yes |
| AC power Input rating | AC 400 V (AC 323 V ~ AC 437 V) |
| Noise | ≤60dB |
| Standby Power | ≤99W |
| Output current | 97A (0~114A) |
| Output power | 60 kW (max) |
| DC output voltage range | 150 V ~ 1000 V DC |
| DC output current | 0 ~ 200 A |
| Power Limiting | Available |
| Storage temperature | -40 to 70°C ambient |
| Operating temperature | -25 to 55°C ambient |
| Operating humidity | 5%~95% (no condensation) |
| Altitude | ≤2000m |
| Electrical protection | Input Over/UnderVoltage Protection, Output Over Voltage Protection, Short-Circuit Protection, Over Current Protection |
| Dimensions mm | 1550 (h) x700 (w) x400 (d) |
| Weight kg | 190 |
| Warranty | 36 months |

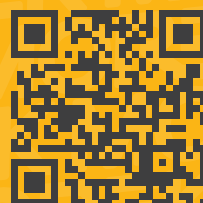


Morek EV 60 kW fast charger

Safe, reliable and efficient charging service while monitoring real-time charging status and progress.

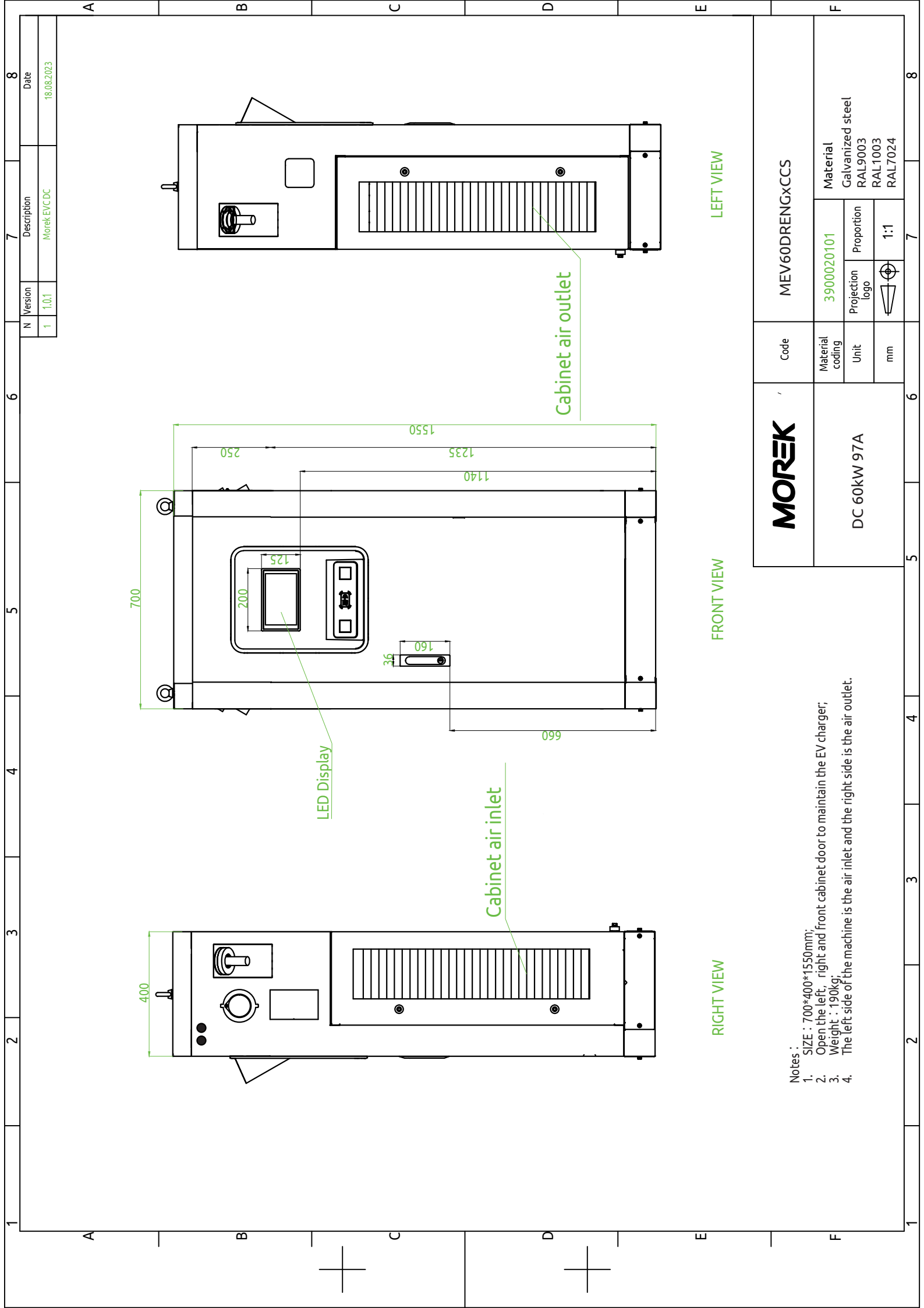
Scan for more

More information about Morek EV chargers and discussions about EV user cases can be found from

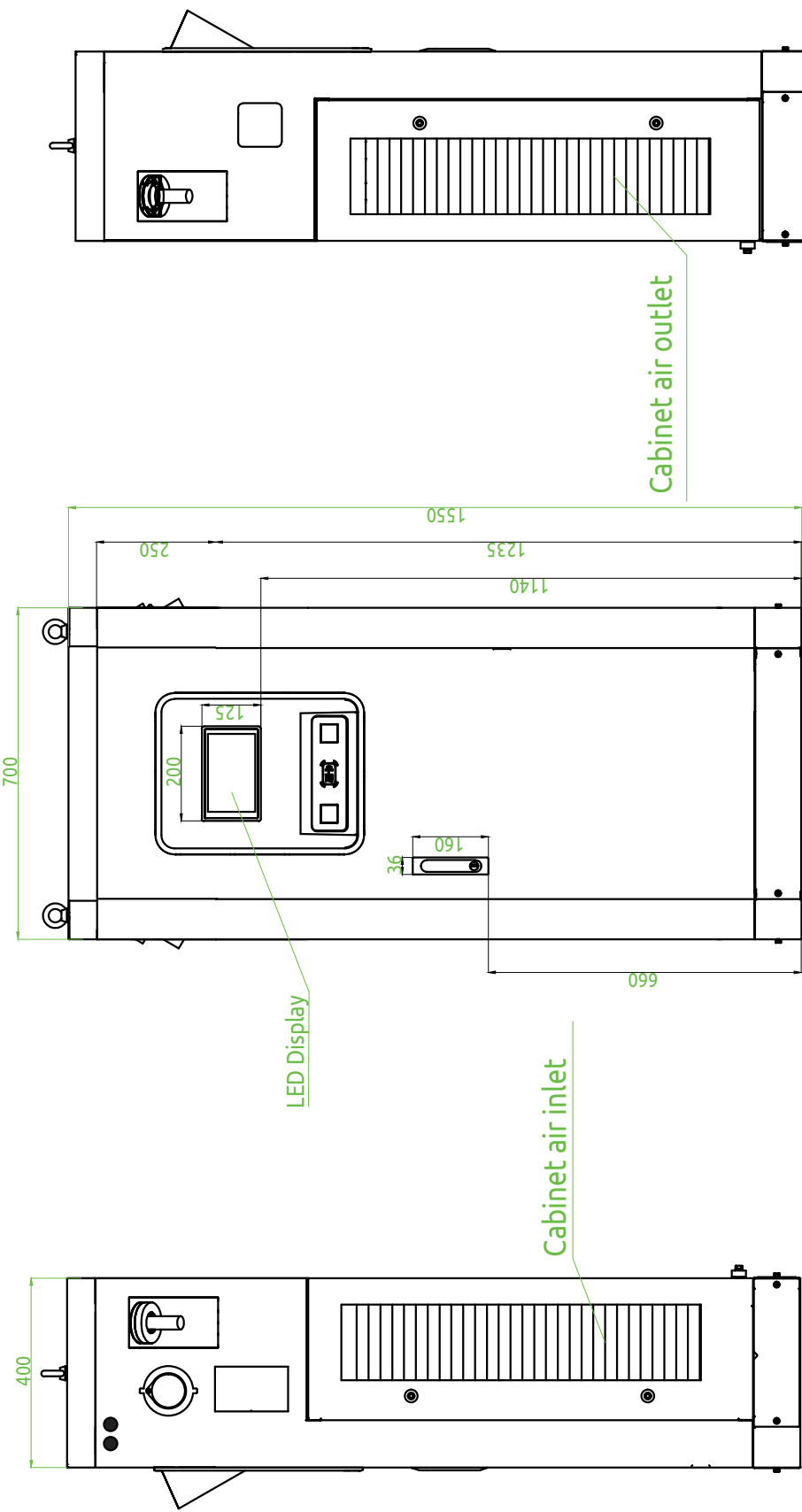


ev.morek.eu

Creating a better future for You



| | | | |
|---|---------|-------------|------------|
| N | Version | Description | Date |
| 1 | 1.0.1 | Morek/EVDC | 18.08.2023 |



| | | | | |
|--------------|-----------------|-----------------|------------|---|
| MOREK | Code | MEV60DRENGxCCS | | |
| | Material coding | 3900020101 | | |
| DC 60kW 97A | Unit | Projection logo | Proportion | Material |
| | mm | | 1:1 | Galvanized steel RAL9003 RAL1003 RAL7024 |

- Notes :
1. SIZE : 700*400*1550mm;
 2. Open the left, right and front cabinet door to maintain the EV charger;
 3. Weight : 190kg;
 4. The left side of the machine is the air inlet and the right side is the air outlet.