

- **DC 30 kW fast charger**
- **7" LCD display**
- **LAN, 4G, RFID**
- **4,5m cable**
- **CCS2 connector**

Product ID	MEV30DRENG4CCS
Charging mode	Level 3, MODE 4 ; CASE C
Connector type	CCS2 connector
Number of connectors	1 (CCS2)
Charging control	APP, QR Code (optional), RFID
Internet connection	Ethernet / 4G
IP protection	IP54
Impact strength	IK10
Display	7-inch touch LCD
Communication protocol	OCPP1.6
Power Distribution	No
Reports	OCPP reporting
Certificate	TUV
Standard	ISO 15118 / DIN 70121 - 2014
Casing material	Galvanized steel
Cooling method	Smart air cooling
Power network configuration	TN-S/TN-C-S/TT
Peak efficiency	>95%
Power meter	Yes
AC power Input rating	AC 400 V (AC 323 V ~ AC 437 V)
Input current	48A (0~58A)
Mounting	Wall-mounted
Standby Power	≤99 W
Output power	30 kW (max)
Output voltage	150 ~ 1000V DC
Output current	0 ~ 100 A
Power Limiting	Available
Storage temperature	-40 to 80°C ambient
Operating temperature	-25 to 50°C ambient
Grid frequency	50Hz
Altitude	≤2000m
Electrical protection	Input Over- and Low Voltage, Output Over-Voltage and Current, Short-Current Protection
Dimensions mm	750 (h) x600 (w) x260 (d)
Weight kg	71
Warranty	36 months

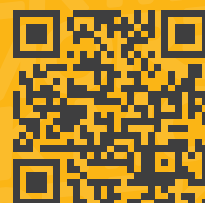


Morek EV 30 kW fast charger

Safe, reliable and efficient charging service while monitoring real-time charging status and progress.

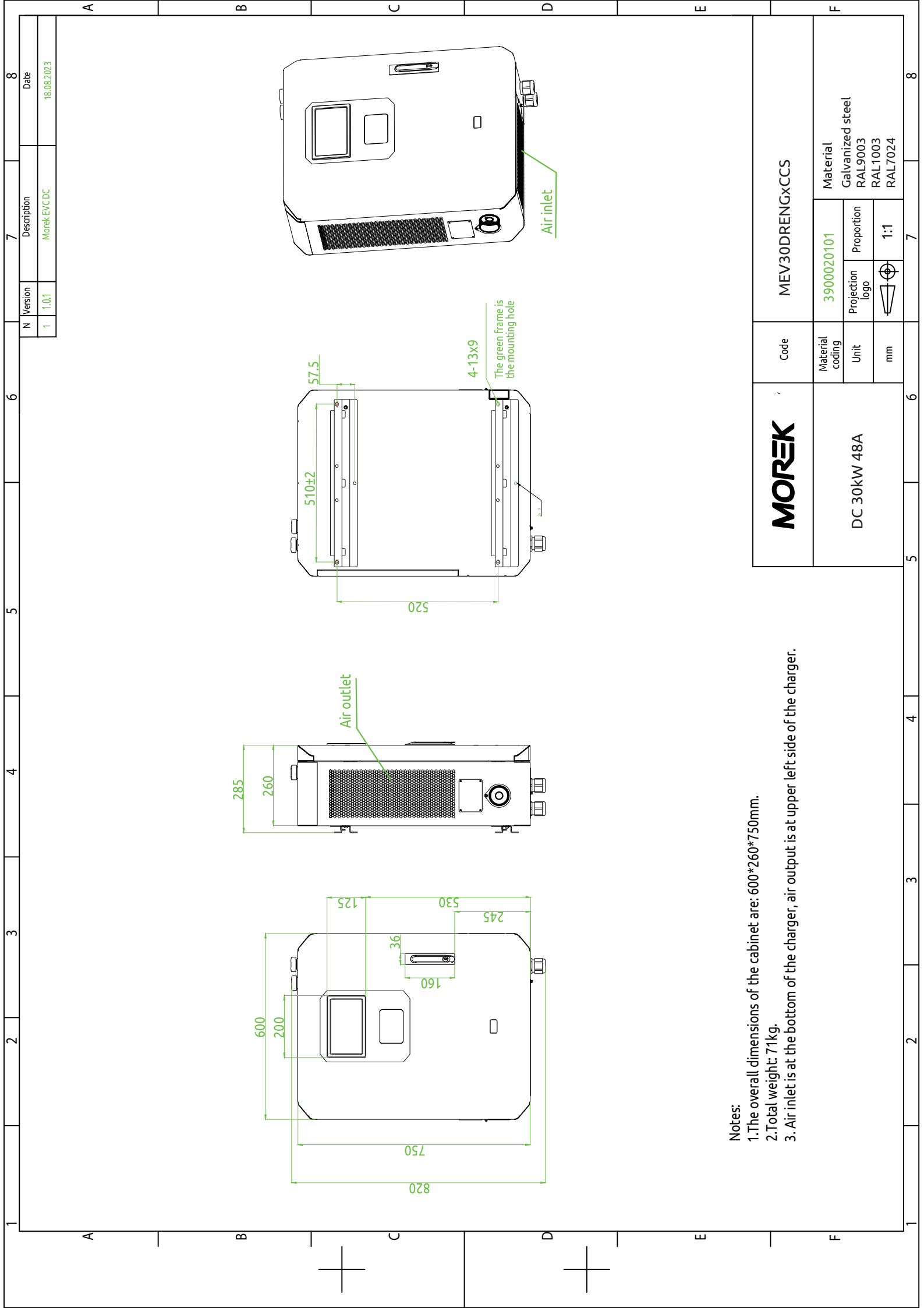
Scan for more

More information about Morek EV chargers and discussions about EV user cases can be found from



ev.morek.eu

Creating a better future for You



N	Version	Description	Date
1	1.0.1	MorekEVCDC	18.08.2023

MOREK		Code	MEV30DRENGxCCS	
DC 30kW 48A	Material coding	3900020101		
	Unit	Projection logo	Proportion	Material
	mm		1:1	Galvanized steel RAL9003 RAL1003 RAL7024

- Notes:
1. The overall dimensions of the cabinet are: 600*260*750mm.
 2. Total weight: 71kg.
 3. Air inlet is at the bottom of the charger, air output is at upper left side of the charger.